

# Synchron-Standard Typen 4-polig

17.01.2024

## Leistung

Dauerbetriebsleistung bei normalem Spindelbetrieb und intensiver Wasserkühlung

Drehzahl in 1000 min <sup>-1</sup>	3	6	9	12	15	18	21	24	27	30	33	36	39	42	45
Frequenz in Hz	100	200	300	400	500	600	700	800	900	1000	1100	1200	1300	1400	1500
Typen (D1/LFe in cm)	Leistung in kW														
mSpW 5.5/4.5-4-s1r..	0.38	0.75	1.1	1.5	1.9	2.3	2.6	3	3.4	3.8	3.9	4.1	4.2	4.4	4.5
mSpW 5.5/6-4-s1r..	0.5	1	1.5	2	2.5	3	3.5	4	4.5	5	5.2	5.4	5.6	5.8	6
mSpW 5.5/8-4-s1r..	0.66	1.3	2	2.6	3.3	4	4.6	5.3	5.9	6.6	6.9	7.2	7.5	7.8	8.1
mSpW 6/4.5-4-s2r..	0.47	0.94	1.4	1.9	2.4	2.8	3.3	3.8	4.2	4.7	4.9	5.2	5.4	5.6	5.8
mSpW 6/6-4-s2r..	0.63	1.3	1.9	2.5	3.1	3.8	4.4	5	5.7	6.3	6.6	6.9	7.3	7.6	7.9
mSpW 6/8-4-s2r..	0.85	1.7	2.5	3.4	4.2	5.1	5.9	6.8	7.6	8.5	8.9	9.4	9.8	10.3	10.7
mSpW 7/4.5-4-s3r..	0.72	1.4	2.2	2.9	3.6	4.3	5	5.8	6.2	6.4	6.7	7	7.3	7.5	7.8
mSpW 7/6-4-s3r..	0.96	1.9	2.9	3.8	4.8	5.8	6.7	7.7	8.2	8.6	9	9.3	9.7	10.1	10.4
mSpW 7/8-4-s3r..	1.3	2.6	4	5.3	6.6	7.9	9.2	10.6	11.3	11.7	12.2	12.6	13.1	13.5	14
mSpW 7/11-4-s3r..	1.9	3.8	5.6	7.5	9.4	11.3	13.2	15.1	16.1	16.6	17.2	17.7	18.3	18.8	19.4
mSpW 8/4-4-s1r..	0.88	1.8	2.6	3.5	4.4	5.2	6.1	7	7.9	8.8	9.6	10.5	11.1	11.6	12.2
mSpW 8/6-4-s1r..	1.3	2.6	3.9	5.2	6.6	7.9	9.2	10.5	11.8	13.1	14.4	15.8	16.6	17.4	18.2
mSpW 8/8-4-s1r..	1.8	3.5	5.2	7	8.8	10.5	12.2	14	15.8	17.5	19.2	21	22	23	24
mSpW 8/11-4-s1r..	2.4	4.8	7.2	9.7	12.1	14.5	16.9	19.3	22	24	27	29	31	32	34
mSpW 8/15-4-s1r..	3.3	6.6	9.9	13.2	16.5	19.8	23	26	30	33	36	40	41	43	45
mSpW 9/6-4-s2r..	1.9	3.8	5.7	7.6	9.4	11.3	12.9	13.7	14.5	15.3	16.1	16.9	17.7	18.6	19.4
mSpW 9/8-4-s2r..	2.5	5	7.6	10.1	12.6	15.1	17.1	18.1	19.1	20	21	22	23	24	25
mSpW 9/11-4-s2r..	3.4	6.9	10.3	13.8	17.2	21	23	25	26	28	29	31	32	34	35
mSpW 9/15-4-s2r..	4.7	9.4	14.1	18.8	24	28	32	34	36	38	40	42	43	45	47
mSpW 10.6/6-4-s3r..	3.6	7.2	10.8	14.4	18	19.4	21	22	23	25	26	27	29		
mSpW 10.6/8-4-s3r..	5	10	15	20	25	27	29	31	33	35	37	39	41		
mSpW 10.6/11-4-s3r..	6.9	13.8	21	28	35	37	40	43	46	49	52				
mSpW 10.6/15-4-s3r..	9.4	18.8	28	38	47	51	55	59							
mSpW 12/4-4-s3r..	3	6	9	12	13.4	14.7	16.1	17.5	18.8						
mSpW 12/6-4-s3r..	4.4	8.8	13.2	17.6	19.8	22	24	26	29						
mSpW 12/8-4-s3r..	6	12	18	24	27	30	33	36	39						
mSpW 12/11-4-s3r..	8.5	17	25	34	38	43	47	51	56						
mSpW 12/15-4-s3r..	11.9	24	36	48	53	58	64	69	74						
mSpW 12/20-4-s3r..	16	32	48	64	71	78	85	92	99						
mSpW 13.5/5-4-s2r..	5	10.1	15.1	17.9	19.7	21	23	25	27	28					
mSpW 13.5/8-4-s2r..	8.1	16.3	24	29	32	35	38	41	44	47					
mSpW 13.5/9-4-s2r..	9.4	18.8	28	34	37	40	43	47	50	53					
mSpW 13.5/11-4-s2r..	11.6	23	35	42	46	51	55	60	65	69					
mSpW 13.5/12.5-4-s2r..	13.8	28	41	49	54	59	64	69	74	78					
mSpW 13.5/15-4-s2r..	16.6	33	50	60	66	72	79	85	91	97					
mSpW 13.5/20-4-s2r..	23	45	68	81	90	99	108	116	125						
mSpW 13.5/26-4-s2r..	29	58	87	105	117	129	141	153	165						
mSpW 15/8-4-s3r..	10.7	21	30	36	41	47	52	58	63	69					
mSpW 15/11-4-s3r..	15.1	30	42	48	54	61	67	73	79	85					
mSpW 15/14-4-s3r..	19.5	39	55	62	70	77	85	93	100	108					
mSpW 15/15-4-s3r..	21	42	59	67	75	83	92	100	108	116					
mSpW 15/20-4-s3r..	28	57	79	90	101	111	122	133	143						
mSpW 15/22-4-s3r..	31	63	88	99	111	122	134	146	157						
mSpW 15/26-4-s3r..	38	75	105	119	133	147	161	175	189						
mSpW 17/5-4-s1r..	8.3	16.6	21	24	27	30	32	35							
mSpW 17/5-4-s1r..	8.3	16.6	21	24	27	30	32	35							
mSpW 17/10-4-s1r..	15.7	31	41	47	54	60	67	73							
mSpW 17/10-4-s1r..	15.7	31	41	47	54	60	67	73							

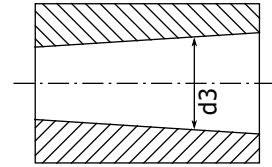
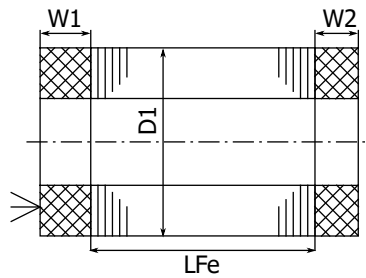


Drehzahl	in 1000 min <sup>-1</sup>	3	6	9	12	15	18	21	24	27	30	33	36	39	42	45
Frequenz	in Hz	100	200	300	400	500	600	700	800	900	1000	1100	1200	1300	1400	1500
Typen (D1/LFe in cm)		Leistung in kW														
mSpW 17/12-4-s1r..	18.8	38	49	57	65	72	80	88								
mSpW 17/12-4-s1r..	18.8	38	49	57	65	72	80	88								
mSpW 17/15-4-s1r..	25	50	65	75	86	96	106	116								
mSpW 17/15-4-s1r..	25	50	65	75	86	96	106	116								
mSpW 17/18-4-s1r..	30	59	81	97	114	131	148									
mSpW 17/18-4-s1r..	30	59	81	97	114	131	148									
mSpW 17/20-4-s1r..	33	66	89	107	124	141										
mSpW 17/20-4-s1r..	33	66	89	107	124	141										
mSpW 17/25-4-s1r..	42	85	114	138	161	184										
mSpW 17/25-4-s1r..	42	85	114	138	161	184										
mSpW 17/30-4-s1r..	50	100	131	152	174	195										
mSpW 17/30-4-s1r..	50	100	131	152	174	195										
mSpW 18/8-4-s1r..	15.7	31	37	43	49	54	60									
mSpW 18/11-4-s1r..	22	44	52	60	68	77	85									
mSpW 18/15-4-s1r..	30	60	72	85	98	110	123									
mSpW 18/20-4-s1r..	41	82	99	116	133	150										
mSpW 18/26-4-s1r..	54	107	129	151	173	194										
mSpW 20/8-4-s4r..	19.2	35	42	50	58	66										
mSpW 20/11-4-s4r..	27	48	59	70	81	92										
mSpW 20/15-4-s4r..	38	68	82	97	111	126										
mSpW 20/20-4-s4r..	50	91	110	130	150	170										
mSpW 20/22-4-s4r..	55	99	121	143	165	187										
mSpW 20/26-4-s4r..	66	119	146	172	199	226										



# Massblatt

Skizze



Hauptabmessungen alle Masse in mm	Stator		Rotor		
	Aussendurchmesser D1	Wickelkopflänge		Bohrung d3	max. Drehzahl
Typ		W1 mit PTC	W2	im Nennpunkt	in 1000 min <sup>-1</sup>
D1/LFe in cm					
mSpW 5.5/ .. -4-s1r..	55	20	17	26	80
mSpW 6/ .. -4-s2r..	60.2	20	17	26	80
mSpW 7/ .. -4-s3r..	70.2	25	20	37	54
mSpW 8/ .. -4-s1r..	80	25	21	39	55
mSpW 9/ .. -4-s2r..	90	29	25	42	51
mSpW 10.6/ .. -4-s3r..	106.5	34	26	53	40
mSpW 12/ .. -4-s3r..	120	39	27	63	28
mSpW 13.5/ .. -4-s2r..	135	37	27	70	33
mSpW 15/ .. -4-s3r..	150	45	33	74	30
mSpW 17/ .. -4-s1r..	170	44	37	90	26
mSpW 17/ .. -4-s1r..	170	44	37	90	26
mSpW 18/ .. -4-s1r..	180	47	40	92	23
mSpW 20/ .. -4-s4r..	200	50	34	106	19