

Synchron-Standard Typen 8-polig

17.01.2024

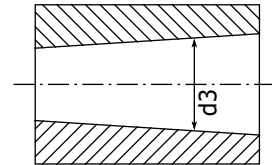
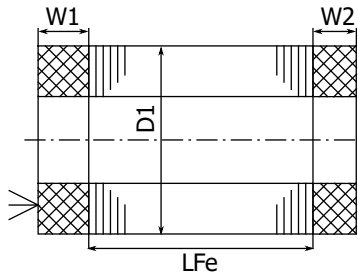
Leistung

Dauerbetriebsleistung bei normalem Spindelbetrieb und intensiver Wasserkühlung

Drehzahl in 1000 min ⁻¹	0.5	1	1.5	2	2.5	3	3.5	4	4.5	5	6	8	10	12	15
Frequenz in Hz	34	67	100	134	167	200	234	267	300	334	400	534	667	800	1000
Typen (D1/LFe in cm)	Leistung in kW														
mSpW 16/8-8-s2r..	3	6	9	12	15	18	19.2	20	22	23	25	30	35	40	48
mSpW 16/11-8-s2r..	4.2	8.3	12.5	16.7	21	25	27	29	31	33	37	44	52	60	72
mSpW 16/15-8-s2r..	5.8	11.5	17.2	23	29	34	37	40	42	45	50	60	70	81	96
mSpW 16/20-8-s2r..	7.8	15.7	24	31	39	47	50	54	57	60	67	80	94	107	127
mSpW 16/26-8-s2r..	10.5	21	31	42	52	63	68	74	80	85	96	119			
mSpW 18/11-8-s2r..	5.5	11	16.5	22	27	33	36	38	41	43	48	58	68	79	
mSpW 18/15-8-s2r..	7.6	15.2	23	30	38	46	49	52	55	58	65	78	91	104	
mSpW 18/20-8-s2r..	10.5	21	31	42	52	63	66	70	74	77	85	99	114	129	
mSpW 18/26-8-s2r..	13.6	27	41	54	68	82	86	91	96	101	110	129	148	167	
mSpW 18/30-8-s2r..	15.7	31	47	63	78	94	100	105	111	116	127	149	171	193	
mSpW 20/11-8-s2r..	6.5	13.1	19.6	26	28	29	30	32	33	34	37	42	48	53	
mSpW 20/15-8-s2r..	9.1	18.3	27	37	39	40	42	44	46	48	52	59	67	74	
mSpW 20/20-8-s2r..	12.6	25	38	50	53	55	57	60	62	65	69	79	88	97	
mSpW 20/26-8-s2r..	16.5	33	49	66	69	72	75	78	80	83	89	100	112	123	

Massblatt

Skizze



Hauptabmessungen alle Masse in mm	Stator		Rotor		
	Aussendurchmesser D1	Wickelkopflänge W1 W2		Bohrung d3	max. Drehzahl in 1000 min ⁻¹
Typ D1/LFe in cm		mit PTC		im Nennpunkt	
mSpW 16/ .. -8-s2r..	160	43	30	101	18
mSpW 18/ .. -8-s2r..	180	44	34	114	15
mSpW 20/ .. -8-s2r..	200	46	33	129	13